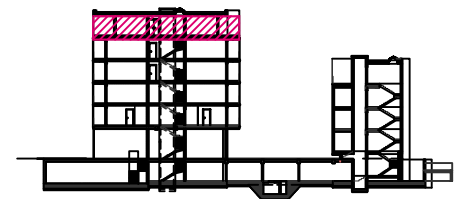
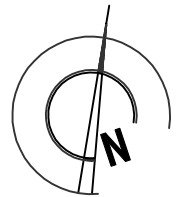
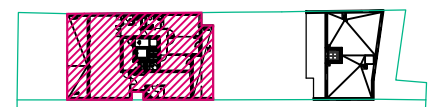


| STAN br. 11 ulična zgrada | | 5. KAT | | | |
|---------------------------|---------------------------|-----------|-------|-----------|---------------|
| br. prostorija | podna obloga | površ. m2 | koef. | UKUPNO m2 | |
| 1 | ULAZNI HALL | KER.PL. | 7,5 | 1 | 7,5 |
| 2 | PREDPROSTOR | PARKET | 4,74 | 1 | 4,74 |
| 3 | KUHINJA+ BLAG.+DN.BORAVAK | PARKET | 53,4 | 1 | 53,4 |
| 4 | WC | KER.PL. | 2,11 | 1 | 2,11 |
| 5 | KUPAONICA | KER.PL. | 3,8 | 1 | 3,8 |
| 6 | HODNIK | PARKET | 8,74 | 1 | 8,74 |
| 7 | SPAVAĆA SOBA | PARKET | 10,93 | 1 | 10,93 |
| 8 | SPAVAĆA SOBA | PARKET | 8,53 | 1 | 8,53 |
| 9 | SPAVAĆA SOBA | PARKET | 9,22 | 1 | 9,22 |
| 10 | SPAVAĆA SOBA | PARKET | 13,1 | 1 | 13,1 |
| 11 | DEGAGEMENT | PARKET | 8,84 | 1 | 8,84 |
| 12 | KUPAONICA | KER.PL. | 3,97 | 1 | 3,97 |
| STAN UKUPNO | | | | | 134,88 |
| 13 | LOGGIA | KER.PL. | 31,73 | 0,75 | 23,80 |
| 14 | LOGGIA | KER.PL. | 23,52 | 0,75 | 17,64 |
| UKUPNO | | | | | 176,32 |



PRESJEK



TLOCRT 5. KAT